



PRODUCT CATALOGUE



SHANDONG TERAFLEX TYRE CO., LTD

📍 NO.182, HAI'ER ROAD, LAOSHAN, QINGDAO, SHANDONG CHINA

✉️ INFO@TERATYREGROUP.COM 📞 +86 532 68066861

🌐 WWW.TERATYREGROUP.COM

PASSENGER CAR/SUV/LIGHT TRUCK TIRES

CONTENTS

COMPANY PROFILE	01
EQUIPMENT	02
CERTIFICATE	03
ECORUN 101	04
ECORUN 103	06
PRIMACY 201	07
PRIMACY 202	09
GRANDLAND A/T+	10
PRIMACY 203	12
GRANDPOWER A/T	14
CITYCROSS H/T	16
SUPERTRAC 301	18
SUPERTRAC 302	19
POLAR BEAR 505	20
POLAR BEAR 506	22

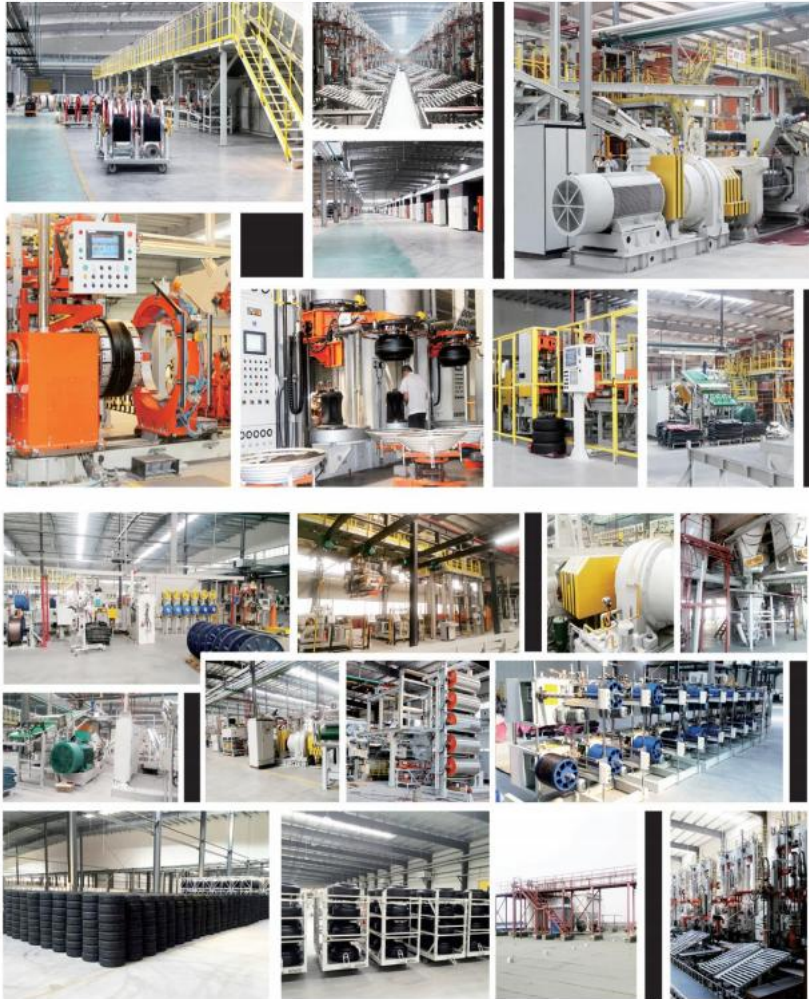
BRIEF INTRODUCTION OF SHANDONG TERAFLEX TYRE CO., LTD

- Rubber enterprise founded in 2015
- Experienced and reliable tyre supplier in Shandong China
- Teraflex offering Passenger car tyres, light truck tyres, 4x4 tyres, truck and bus tyres etc.
- Wide range, satisfied quality, stable supply, competitive price.
- Facility is in Guangrao, Shandong while sales office locates in Qingdao, Shandong.
- Annual production capacity is 12 million pieces for PCR and 2 million pieces for TBR. We also research and develop various new products according to the market demand and customer needs.





EQUIPMENT



OBTAINED CERTIFICATES:
DOT/GCC/SASO/ECE/REACH/SONCAP/INMETRO/CCC/BIS/PVO

ECORUN 101



PERFORMANCE RATINGS:

Wet performance:

Dry performance:

Comfort:

Noise absorption:

Tread life:



WET PERFORMANCE

Four grooves with open shoulder provides perfect water evacuation wet grip and improve hydroplaning resistance.



EXCEPTIONAL HANDLING

Center rib design delivers better straight handling.



NOISE ABSORPTION

Improved shoulder sipes provide better handling during cornering and noise emission.

SIZE	LOAD INDEX	SPEED RANGE	STANDARD RIM	SECTION WIDTH(mm)	OVERALL DIAMETER(mm)	MAXLOAD KG LBS	MAX PRESSURE Kpa Psi	UTQG
155/65R13	73	T	4.5J	157	532	365/805	350/51	360 A A
155/70R13	75	T	4.5B	157	548	387/853	350/51	360 A A
155/80R13	79	T	4 1/2J	157	578	437/963	350/51	360 A A
165/65R13	77	T	5J	170	544	412/908	350/51	360 A A
165/70R13	79	T	5.00B	170	562	437/963	350/51	360 A A
175/70R13	82	T	5.00B	177	576	475/1047	350/51	360 A A
185/70R13	86	T	5 1/2J	189	590	530/1168	350/51	360 A A
155/65R14	75	T	4 1/2J	157	558	387/853	350/51	360 A A
165/60R14	75	H	5J	170	554	387/853	350/51	360 A A
165/65R14	79	H	5J	170	570	437/963	300/44	360 A A
165/70R14	81	T	5J	170	588	462/1018	350/51	360 A A
175/65R14	82	H	5J	177	584	475/1047	350/51	360 A A
175/70R14	84	T	5J	177	602	500/1102	350/51	360 A A
185/60R14	82	H	5 1/2J	189	578	475/1047	350/51	360 A A
185/65R14	86	H	5 1/2J	189	596	530/1168	350/51	360 A A
185/70R14	88	T	5 1/2J	189	616	560/1235	350/51	360 A A
195/60R14	86	H	6J	201	590	530/1168	350/51	360 A A
195/70R14	91	T	6J	201	630	615/1356	350/51	360 A A
205/60R14	88	H	6J	209	602	560/1235	300/44	360 A A
205/70R14	95	H	6J	209	644	690/1521	350/51	360 A A
215/70R14	96	H	6 1/2J	221	658	710/1565	350/51	360 A A
175/65R15	84	H	5J	177	609	500/1102	350/51	360 A A
185/60R15	84	H	5 1/2J	189	603	500/1102	350/51	360 A A
185/65R15	88	H	5 1/2J	189	621	560/1235	350/51	360 A A
195/50R15	82	V	6J	201	577	475/1047	350/51	360 A A
195/55R15	85	V	6J	201	595	515/1135	350/51	360 A A
195/60R15	88	H	6J	201	615	560/1235	350/51	360 A A
195/65R15	91	H	6J	201	635	615/1356	350/51	360 A A
205/60R15	91	H	6J	209	627	615/1356	350/51	360 A A
205/65R15	94	H	6J	209	647	670/1477	350/51	360 A A
205/70R15	96	T	6J	209	669	710/1565	350/51	360 A A
215/70R15	98	T	6 1/2J	221	683	750/1653	350/51	360 A A
225/70R15	100	H	6 1/2J	228	697	800/1764	300/44	360 A A
205/45R16	83	H	7J	206	590	487/1073	350/51	360 A A
205/55R16	91	V	6 1/2J	214	632	615/1356	350/51	360 A A
205/60R16	92	H	6J	209	652	630/1389	350/51	360 A A
215/55R16	93	V	7J	226	642	650/1433	350/51	360 A A
215/60R16	95	H	6 1/2J	221	664	690/1521	350/51	360 A A
225/50R16	92	V	7J	233	632	630/1389	350/51	360 A A
225/55R16	95	V	7J	233	654	690/1521	350/51	360 A A
225/60R16	98	H	6 1/2J	228	676	750/1653	350/51	360 A A

ECORUN 103

PERFORMANCE RATINGS:



PRIMACY 201

PERFORMANCE RATINGS:



NOISE ABSORPTION

Improve head dispersion.
 Reduced noise emissions.

WET PERFORMANCE

Efficient water drainage
 and superior high speed
 stability.

LONGER SERVICE LIFE

Greater driving stability.
 Improved durability for
 a longer tread life.



EXCEPTIONAL HANDLING

The combination of blocks provides a superior driving
 performance and a strong grip.



EXTENDED LIFE

Special compound design ensures a long mileage.



WET PERFORMANCE

Three main grooves contribute to better water drainage
 and wet traction.

SIZE	LOAD INDEX	SPEED RANGE	STANDARD RIM	SECTION WIDTH(mm)	OVERALL DIAMETER(mm)	MAXLOAD KG	MAX PRESSURE LBS	UTQG
165/55R14	72	V	5.5J	170	538	475/1047	300/44	420AA
165/50R15	72	V	5J	170	547	500/1102	300/44	420AA

PRIMACY 201

PERFORMANCE RATINGS:



PRIMACY 202

PERFORMANCE RATINGS:



SIZE	LOAD INDEX	SPEED RANGE	STANDARD RIM	SECTION WIDTH(mm)	OVERALL DIAMETER(mm)	MAXLOAD KG LBS	MAX PRESSURE Kpa Psi	UTQG
185/55R15	82	H	6J	194	585	475/1047	350/51	320 A A
195/55R15	85	V	6J	201	595	515/1135	350/51	320 A A
195/45R16	80	V	6 1/2J	195	582	450/992	350/51	320 A A
195/55R16	87	V	6J	201	620	545/1201	350/51	320 A A
195/60R16	89	H	6J	201	640	580/1279	300/44	320 A A
205/50R16	87	V	6 1/2J	214	612	545/1201	350/51	320 A A
205/40ZR17	84XL	W	7 1/2J	212	596	500/1102	340/50	320 A A
205/50R17	93XL	V	6 1/2J	214	638	650/1433	340/50	320 A A
215/40ZR17	87XL	W	7 1/2J	218	604	545/1201	340/50	320 A A
215/45R17	91XL	W	7J	213	626	615/1356	340/50	320 A A
215/50ZR17	95XL	W	7J	226	648	690/1521	340/50	320 A A
215/55ZR17	94	W	7J	226	668	670/1477	350/51	320 A A
225/45R17	94XL	W	7 1/2J	225	634	670/1477	340/50	320 A A
225/50R17	98XL	V	7J	233	658	750/1653	340/50	320 A A
225/55ZR17	101XL	W	7J	233	680	825/1819	340/50	320 A A
235/45R17	97XL	W	8J	236	644	730/1609	340/50	320 A A
235/50ZR17	96	W	7 1/2J	245	668	710/1565	350/51	320 A A
235/55ZR17	99	W	7 1/2J	245	690	775/1709	350/51	320 A A
215/35ZR18	84XL	W	7 1/2J	218	607	500/1102	340/50	320 A A
225/40R18	92XL	W	8J	230	637	630/1389	340/50	320 A A
225/45ZR18	95XL	W	7 1/2J	225	659	690/1521	340/50	320 A A
235/40ZR18	95XL	W	8 1/2J	241	645	690/1521	340/50	320 A A
235/45ZR18	98XL	W	8J	236	669	750/1653	340/50	320 A A
245/40ZR18	97XL	W	8 1/2J	248	653	730/1609	340/50	320 A A
245/45ZR18	100XL	W	8J	243	677	800/1764	340/50	320 A A
255/35ZR18	94XL	W	9J	260	635	670/1477	340/50	320 A A
245/35R20	95XL	W	8 1/2J	248	680	690/1521	340/50	320 A A



HIGH MANEUVERABILITY

Outstanding performance on all roads with the wide tread and high groove siperation. Tranquil ride with the ideal pitch design and the variable sound frequency blocks.



WET PERFORMANCE

Four wider longitudinal water escaping grooves and spacious transverse water.escaping grooves water to improve water dispersion for excellent traction and braking on wet roads.

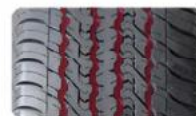
SIZE	LOAD INDEX	SPEED RANGE	STANDARD RIM	SECTION WIDTH(mm)	OVERALL DIAMETER(mm)	MAXLOAD KG LBS	MAX PRESSURE Kpa Psi	UTQG
285/50R20	116XL	V	9J	297	794	1250/2756	340/50	320 A A

GRANDLAND A/T+



PERFORMANCE RATINGS:

- Wet performance: 
- Dry performance: 
- Comfort: 
- Noise absorption: 
- Tread life: 



GOOD DRAINAGE

Four wide, zigzag longitudinal grooves can quickly drain water, improve the grip on wet road, and make driving safer in rainy days.



SLOT PATTERN STEEL SHEET

The sipe design effectively breaks the water film on wet roads, providing high wet handling performance.



BLOCK PATTERN DESIGN

Large tread block design, stronger rigidity, strong and not easy to deform, improves load-bearing capacity.



CLOSED SHOULDER DESIGN

The tire shoulder adopts a continuous design to block the transmission of pattern noise and increase the tire's contact area during turning, greatly improving the tire's handling and making driving safer and smoother.

SIZE	LOAD INDEX	SPEED RANGE	STANDARD RIM	SECTION WIDTH(mm)	OVERALL DIAMETER(mm)	MAXLOAD KG LBS	MAX PRESSURE Kpa Psi	UTQG
265/70R16	112	T	8J	272	778	1120/2469	300/44	460 A A
275/70R16	114	H	8J	279	792	1180/2601	300/44	460 A A
265/65R17	112	T	8J	272	776	1120/2469	300/44	460 A A
265/70R17	115	T	8J	272	804	1215/2679	300/44	460 A A
275/65R17	115	T	8J	279	790	1215/2679	300/44	460 A A
285/65R17	116	H	8 1/2J	292	802	1250/2756	300/44	460 A A
265/60R18	110	H	8J	272	775	1060/2337	300/44	460 A A
265/65R18	114	H	8J	272	801	1180/2601	300/44	460 A A
285/60R18	116	H	8 1/2J	292	799	1250/2756	300/44	460 A A

PRIMACY 203



PERFORMANCE RATINGS:



HIGH PERFORMANCE



NOISE ABSORPTION

Comfortable and quiet pattern design, using short pitch, large number of irregular arrangement, reduce tire noise.



EXCEPTIONAL HANDLING

Special composite design reduces heat generation from the shoulder and improves grip performance in all road conditions.



SIZE	LOAD INDEX	SPEED RANGE	STANDARD RIM	SECTION WIDTH(mm)	OVERALL DIAMETER(mm)	MAXLOAD KG LBS	MAX PRESSURE Kpa Psi	UTQG
185/55R16	83	V	6J	610	194	487/1074	300/44	340 A A
215/45R16	86	V	7J	600	213	530/1168	300/44	340 A A
205/65R16	95	V	6J	672	209	690/1521	300/44	340 A A
205/45ZR17	84	W	7J	616	206	500/1102	300/44	340 A A
205/50ZR17	89	W	6 1/2J	638	214	580/1279	300/44	340 A A
215/50R18	92	V	7J	673	226	630/1389	300/44	340 A A
225/50ZR18	95	W	7J	683	233	690/1521	300/44	340 A A
255/45ZR18	99	W	8 1/2J	687	255	775/1709	300/44	340 A A
205/40ZR18	82	W	7 1/2J	621	212	475/1047	300/44	340 A A
235/50R18	97	V	7 1/2J	693	245	730/1609	300/44	340 A A
255/55ZR18	105	V	8J	737	265	925/2039	300/44	340 A A
245/45ZR19	98	W	8J	703	243	750/1653	300/44	340 A A
225/45ZR19	92	W	7 1/2J	685	225	630/1389	300/44	340 A A
255/35ZR19	92	W	9J	661	260	630/1389	300/44	340 A A
255/40ZR19	96	W	9J	687	260	710/1565	300/44	340 A A
235/35ZR19	87	W	8 1/2J	647	241	545/1201	300/44	340 A A
245/35ZR19	89	W	8 1/2J	655	248	580/1279	300/44	340 A A
225/40ZR19	89	W	8J	663	230	580/1279	300/44	340 A A
245/40ZR19	94	W	8 1/2J	679	248	670/1477	300/44	340 A A
225/35ZR19	84	W	8J	641	230	500/1102	300/44	340 A A
275/40ZR20	102	W	9 1/2J	728	278	850/1874	300/44	340 A A
275/60R20	115	V	8J	830	279	1215/2679	300/44	340 A A
275/45ZR20	106	W	9J	756	273	950/2094	300/44	340 A A
245/45ZR20	99	W	8J	728	243	775/1709	300/44	340 A A
225/35ZR20	90 XL	W	8J	666	230	600/1323	340/50	340 A A



GRANDPOWER A/T

ALL TERRAIN MASTER FOR
SUV/LIGHT TRUCK

PERFORMANCE RATINGS:

Wet performance: ██████████
 Dry performance: ██████████
 Comfort: ██████████
 Noise absorption: ██████████
 Tread life: ██████████



EXTENDED LIFECYCLE

Wide-angle lateral grooves ensure excellent on-and-off road performance.

WET PERFORMANCE

Unique pattern design reduces noise generation, improves driving stability and wet grip performance.

GOOD DRIVING COMFORT

Optimized tread compound contributes to good durability, good driving comfort, high traction on both dry and wet grounds.

SIZE	LOAD INDEX	SPEED RANGE	STANDARD RIM	SECTION WIDTH(mm)	OVERALL DIAMETER(mm)	MAXLOAD		MAX PRESSURE		UTQG
						SINGLE KG LBS	DUAL KG LBS	Kpa	Psi	
215/75R15	100	S	6J	216	703	800/1764	-/-	350/50	480 A B	
225/70R15C	112/110	R	6 1/2J	228	697	1120/2470	1060/2335	450/65		
225/75R15	106XL	S	6J	223	719	950/2094	-/-	340/50	480 A B	
LT235/75R15	110/107	S	6 1/2J	235	733	1060/2335	975/2150	450/65		
205/80R16	104XL	T	5 1/2J	203	734	900/1984	-/-	340/50	480 A B	
235/65R16C	115/113	R	7J	240	712	1215/2679	1150/2535	475/69		
235/70R16	106	T	7J	240	736	950/2094	-/-	350/51	480 A A	
LT245/75R16	120/116	Q	7J	248	774	1380/3042	1260/2778	550/80		
245/70R16	111XL	T	7J	248	750	1090/2403	-/-	340/50	480 A A	
265/70R16	112	T	8J	272	778	1120/2469	-/-	350/51	480 A B	
225/60R17	99	H	6 1/2J	228	702	775/1709	-/-	350/51	480 A A	
225/65R17	102	H	6 1/2J	228	724	850/1874	-/-	350/51	480 A A	
235/60R18	107XL	H	7J	240	739	975/2149	-/-	340/50	480 A A	

CITYCROSS H/T



H/T TIRE FOR CITY SUV

PERFORMANCE RATINGS:



WET PERFORMANCE

Four wide longitudinal water escaping grooves and spacious transverse water-escaping grooves water to improve water dispersion for excellent traction and braking on wet roads. Powerful with the luxurious SUV-oriented UHP tyre.

EXCEPTIONAL HANDLING

Outstanding performance on all roads with the wide tread and high groove siperation. Tranquil ride with the ideal pitch designand the variable sound frequency blocks, under-lay damage and anti fraction from the unique sidewallprotection layer.

SIZE	LOAD INDEX	SPEED RANGE	STANDARD RIM	SECTION WIDTH(mm)	OVERALL DIAMETER(mm)	MAXLOAD KG LBS	MAX PRESSURE Kpa Psi	UTQG
235/75R15	105	S	6 1/2J	235	733	925/2039	300/44	480 A B
215/65R16	102XL	H	6 1/2J	221	686	850/1874	340/50	480 A B
215/70R16	100	T	6 1/2J	221	708	800/1764	300/44	480 A B
225/70R16	103	T	6 1/2J	228	722	875/1929	300/44	480 A B
235/60R16	100	H	7J	240	688	800/1764	300/44	480 A B
255/70R16	111	H	7 1/2J	260	764	1090/2403	300/44	480 A B
215/60R17	96	H	6 1/2J	221	690	710/1565	300/44	480 A B
225/60R17	99	V	6 1/2J	228	702	775/1709	300/44	480 A B
225/65R17	102	V	6 1/2J	228	724	850/1874	300/44	480 A B
235/65R17	108XL	H	7J	240	738	1000/2205	340/50	480 A B
245/65R17	107	H	7J	248	750	975/2149	300/44	480 A B
265/65R17	112	H	8J	272	776	1120/2469	300/44	480 A B
265/70R17	115	S	8J	272	804	1215/2679	300/44	480 A B
215/55R18	95	V	7J	226	693	690/1521	300/44	480 A B
235/55R18	100	V	7 1/2J	245	715	800/1764	300/44	480 A B
235/65R18	106	H	7J	240	763	950/2094	300/44	480 A B
265/70R18	116	S	8J	272	829	1250/2756	300/44	480 A B
225/55R19	99	V	7J	235	731	775/1709	300/44	480 A B
235/55R19	105XL	V	7 1/2J	245	741	925/2039	340/50	480 A B
245/55ZR19	103	W	7 1/2J	253	753	875/1929	300/44	480 A B

SUPERTRAC 301

PERFORMANCE RATINGS:



SUPERTRAC 302

LONG MILEAGE C TIRE



GOOD DRIVING COMFORT

The combination of blocks provides a superior driving performance and a strong grip.



EXCEPTIONAL HANDLING

Special compound design ensures a long mileage.



WET PERFORMANCE

Three main grooves contribute to better water drainage and wet traction.



WET PERFORMANCE

Three main grooves contribute to better water drainage and wet traction.

GOOD DRIVING COMFORT

The combination of blocks provides a superior driving performance and a strong grip.

EXCEPTIONAL HANDLING

Special compound design ensures a long mileage.

SIZE	LOAD INDEX	SPEED RANGE	STANDARD RIM	SECTION WIDTH(mm)	OVERALL DIAMETER(mm)	MAXLOAD SINGLE KG LBS	MAXLOAD DUAL KG LBS	MAX PRESSURE Kpa Psi
155R13C	90/88	Q	4.50B	157	578	600/1323	560/1235	450/65
165R13C	94/93	R	4.50B	165	594	670/1477	650/1433	450/65
175R13C	97/95	R	5.00B	177	610	730/1609	690/1521	450/65
185R14C	102/100	Q	5 1/2J	189	652	850/1875	800/1765	450/65
195R14C	106/104	Q	5 1/2J	196	668	950/2095	900/1985	450/65
185R15C	103/102	Q	5 1/2J	189	677	875/1930	850/1875	450/65
195/70R15C	104/102	Q	6J	201	655	900/1984	850/1874	450/65
195R15C	106/104	R	5 1/2J	196	693	950/2094	900/1984	450/65
175R16C	101/99	Q	5J	178	684	825/1819	775/1709	450/65
185/75R16C	104/102	S	5 J	184	684	900/1985	850/1875	475/70

SIZE	LOAD INDEX	SPEED RANGE	STANDARD RIM	SECTION WIDTH(mm)	OVERALL DIAMETER(mm)	MAXLOAD SINGLE KG LBS	MAXLOAD DUAL KG LBS	MAX PRESSURE Kpa Psi
175/70R14C	95/93	S	5J	177	602	690/1521	650/1433	375/54
225/65R16C	112/110	T	6 1/2J	228	698	1120/2469	1060/2337	475/69
235/65R16C	115/113	R	7J	240	712	1215/2679	1150/2535	475/69

POLAR BEAR 505

SNOWFIELD PIONEER



EXCEPTIONAL HANDLING

Serrated design in the outside main groove assures high grip and braking force on ICE and SNOW covered surfaces.

ANTI SLIP PERFORMANCE

Deep and densely distributed grooves and steel sheet helps soften the tread, contributes to shorten braking distance on ice covered surface.

SIZE	LOAD INDEX	SPEED RANGE	STANDARD RIM	SECTION WIDTH(mm)	OVERALL DIAMETER(mm)	MAXLOAD KG LBS	MAX PRESSURE Kpa Psi
155/65R13	73	T	41/2J	157	532	365/805	350/51
165/70R13	79	T	5.00B	170	562	437/963	350/51
175/70R13	82	T	5.00B	177	576	475/1047	350/51
175/65R14	82	T	5J	177	584	475/1047	350/51
175/70R14	84	T	5J	177	602	500/1102	300/44
185/60R14	82	T	5 1/2J	189	578	475/1047	350/51
185/65R14	86	T	5 1/2J	189	596	530/1168	350/51
185/70R14	88	T	5 1/2J	189	616	560/1235	300/44
185/60R15	84	T	5 1/2J	189	603	500/1102	350/51
195/60R15	88	T	6J	201	615	560/1235	350/51
185/65R15	88	T	5 1/2J	189	621	560/1235	300/44
195/55R15	85	T	6J	201	595	515/1135	300/44
195/65R15	91	T	6J	201	635	615/1356	350/51
205/65R15	94	T	6J	209	647	670/1477	350/51
205/55R16	91	H	6 1/2J	214	632	615/1356	350/51
205/60R16	92	T	6J	209	652	630/1389	350/51
215/60R16	95	T	6 1/2J	221	664	690/1521	350/51
225/60R16	98	T	6 1/2J	228	676	750/1653	350/51
205/50R17	89	H	6 1/2J	214	638	580/1279	350/51
225/45R17	91	H	7 1/2J	225	634	615/1356	350/51
215/55R17	94	T	7J	226	668	670/1477	300/44
225/55R17	97	T	7J	233	680	730/1609	300/44
215/60R17	96	T	6 1/2J	221	690	710/1565	300/44
225/60R17	99	T	6 1/2J	228	702	775/1709	300/44
225/65R17	102	T	6 1/2J	228	724	850/1874	300/44
215/55R18	95	T	7J	226	693	690/1521	300/44
225/60R18	100	T	6 1/2J	228	727	800/1764	300/44
245/55R19	103	T	7 1/2J	253	753	875/1929	300/44

POLAR BEAR 506

SNOWFIELD PIONEER



SUPERIOR DRIVING PERFORMANCE

Snow pattern designed for driving in snow and ice.

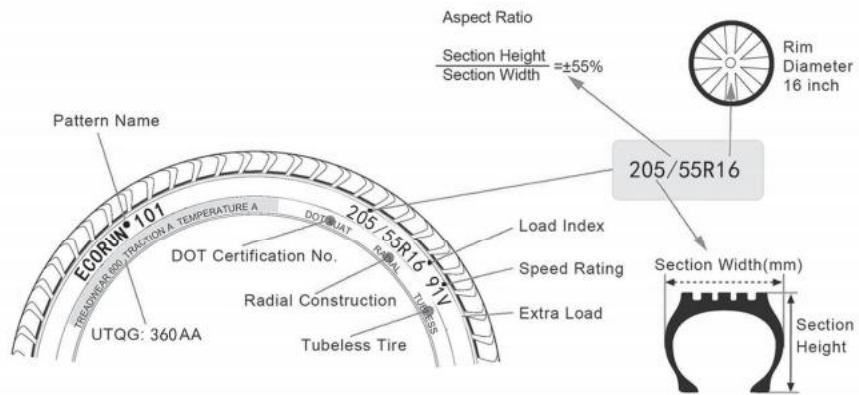
EXCEPTIONAL HANDLING

The design of multi-steel sheet and large pattern effectively improve the anti-skid ability.

Special snow tread rubber keep elasticity at low temperature, ensure grip.



SIZE	LOAD	SPEED	STANDARD	SECTION	OVERALL	MAXLOAD	MAX PRESSURE	
	INDEX	RANGE	RIM	WIDTH(mm)	DIAMETER(mm)		KG	LBS
215/55R16	93	T	7J	642	226	650/1433	300/44	
215/50R17	95XL	H	7J	648	226	690/1521	340/50	
225/50R17	94	T	7J	658	233	670/1477	300/44	
245/70R17	110	T	7J	776	248	1060/2337	300/44	
225/55R18	98	T	7J	705	233	750/1653	300/44	
235/55R18	100	T	7 1/2J	715	245	800/1764	300/44	
235/60R18	103	T	7J	739	240	875/1929	300/44	
235/50R19	99	H	7 1/2J	719	245	775/1079	300/44	
225/55R19	99	H	7J	731	233	775/1079	300/44	
235/55R19	105XL	H	7 1/2J	741	245	925/2039	340/50	



Speed Symbols

SI	KM/H
B	50
C	60
D	65
E	70
F	80
G	90
J	100
K	110
L	120
M	130
N	140
P	150
Q	160
R	170
S	180
T	190
U	200
H	210
V	240
W	270
Y	300
Z	Above 240

Load Capacity Index

LI	KG	LI	KG	LI	KG	LI	KG
50	190	70	335	90	600	110	1060
51	195	71	345	91	615	111	1090
52	200	72	355	92	630	112	1120
53	206	73	365	93	650	113	1150
54	212	74	375	94	670	114	1180
55	218	75	387	95	690	115	1215
56	224	76	400	96	710	116	1250
57	230	77	412	97	730	117	1285
58	236	78	425	98	750	118	1320
59	243	79	437	99	775	119	1360
60	250	80	450	100	800	120	1400
61	257	81	462	101	825	121	1450
62	265	82	475	102	850	122	1500
63	272	83	487	103	875	123	1550
64	280	84	500	104	900	124	1600
65	290	85	515	105	925	125	1650
66	300	86	530	106	950	126	1700
67	307	87	545	107	975	127	1750
68	315	88	560	108	1000	128	1800
69	325	89	580	109	1030	129	1850
						130	1900

