



SHANDONG TERAFLEX TYRE CO., LTD

📍 NO.182, HAI' ER ROAD, LAOSHAN, QINGDAO, SHANDONG CHINA

✉ INFO@TERATYREGROUP.COM 📞 +86 532 68066861

🌐 WWW.TERATYREGROUP.COM

PASSENGER CAR/SUV/LIGHT TRUCK TIRES



EPOCH NUOVO HP		EPOCH SPORT ES		ROADCROSSER H/T		PATHBREAKER A/T	MUDBREAKER MT	EMPIRE TRAC ET	EMPIRE TRAC ET2	EMPIRE TRAC ET3	POLARWOLF 505	POLARWOLF 506
195/50R15	175/70R13	215/35ZR18	245/45ZR18	235/45R19	255/60R18	31X10.50R15LT	LT285/70R17	185R14C	155R13C	6.50R16LT	215/50R17	255/40R20
195/55R15	185/70R13	255/35ZR18	255/45R18	255/45R19	265/60R18	285/60R18	LT265/70R17	195R14C	165R13C	7.00R16LT	205/55R16	235/45R17
185/55R15	165/70R14	265/35ZR18	245/45ZR20	265/45ZR20	275/60R20	235/60R18	LT275/70R18	195R15C	175R13C	7.50R16LT	215/55R16	225/45R19
185/55R16	175/70R14	225/35ZR19	245/45ZR19	265/45R21	215/65R16	225/65R17	LT235/75R16	175/70R14LT	165/70R13LT		225/55R16	245/45R18
205/55R16	185/70R14	235/35ZR19	255/45ZR20	275/45ZR21	215/65R17	LT245/65R17	LT245/75R16	195/70R15C	165/70R14LT		225/55R17	245/45R19
175/60R13	195/70R14	245/35ZR19	275/45ZR20	235/50R19	225/65R17	LT265/65R17	LT265/75R16	205/70R15C	6.50R16LT		185/60R14	245/45R20
165/60R14	155/80R13	255/35ZR19	195/50R16	245/50ZR19	235/65R17	LT285/65R18	LT285/75R16	225/70R15C	7.00R16LT		185/60R15	225/50R18
185/60R14		275/30ZR20	205/50ZR16	255/50ZR19	245/65R17	235/70R16	LT235/85R16	215/70R16LT	7.00R16LT		195/60R15	235/50R18
195/60R14		275/35ZR19	215/50ZR17	265/50ZR19	265/65R17	LT245/70R16	31X10.50R15LT	195/65R16C	7.50R16LT		205/60R16	235/50R19
205/60R14		255/35ZR20	225/50ZR17	235/50R20	235/65R18	LT255/70R16	33X12.50R15LT	205/65R16C	7.50R16LT		215/60R16	255/50R19
165/60R15		215/35ZR20	235/50ZR17	245/50R20	265/65R18	LT265/70R16	35X12.50R18LT	215/65R16C			175/65R14	245/50R20
175/60R15		205/40ZR17	205/50ZR17	265/50R20	205/70R15	LT285/70R17	35X12.50R20LT	225/65R16C			185/65R14	215/55R17
185/60R15		215/40ZR17	215/50R18	275/50ZR20	215/70R16	LT215/75R15	35X12.50R17LT	235/65R16C			185/65R15	235/55R17
195/60R15		215/40ZR18	225/50R18	285/50R20	225/70R16	LT235/75R15		185/75R16C			195/65R15	225/55R18
205/60R15		225/40ZR18	235/50ZR18	275/50R21	235/70R16	LT245/75R16		195/75R16C			205/65R15	235/55R19
205/60R16		235/40ZR18	245/50ZR18	275/50R22	245/70R16	LT265/75R16		215/75R15LT			215/65R16	245/55R19
215/60R16		245/40ZR18	195/55ZR16	235/55R17	255/70R16	LT285/75R16		215/75R16C			165/70R13	235/55R20
225/60R16		235/40ZR19	205/55ZR16	215/55R18	265/70R16						175/70R14	225/60R17
155/65R13		245/40ZR19	215/55ZR16	225/55R18	265/70R17							235/60R18
165/65R13		275/40ZR19	225/55ZR16	235/55R18	255/70R18							235/60R19
155/65R14		245/40ZR20	205/55ZR17	255/55R18	265/70R18							235/65R17
165/65R14		275/40ZR20	215/55ZR17	225/55R19	215/75R15							265/65R17
175/65R14		195/45R16	225/55ZR17	235/55R19	225/75R15							235/70R16
185/65R14		205/45ZR16	235/55ZR17	245/55ZR19	235/75R15							265/70R18
175/65R15		215/45ZR16	235/55R18	255/55R19								185R14C
185/65R15		205/45ZR17	275/55R20	275/55ZR19								
195/65R15		215/45ZR17	195/60R16	235/55R20								
205/65R15		225/45ZR17		235/60R16								
215/65R15		235/45ZR17		215/60R17								
205/65R16		245/45ZR17		225/60R17								
215/65R16		215/45ZR18		225/60R18								
155/70R13		225/45ZR18		235/60R18								
165/70R13		235/45ZR18		245/60R18								
40 Sizes	60 Sizes	57 Sizes	17 Sizes	13 Sizes	17 Sizes	10 Sizes	3 Sizes	18 Sizes	25 Sizes			
Page:01-02	Page:03-04	Page:05-06	Page:07-08	Page:09	Page:10	Page:11	Page:12	Page:13	Page:14			

EPOCH NUOVO HP



GOOD DRAINAGE

Four longitudinal drainage grooves, rapid drainage to enhance the handling on wet roads.

GOOD COMFORT

Asymmetric pattern design, perfect combination of comfort and handling.

IMPROVE SERVICE LIFE

The edge of the groove is specially treated to prevent abnormal tire wear, improve tire safety and extend tire life.

EFFECTIVELY REDUCING NOISE

The closed sound insulation design of the outer shoulder effectively reduces noise and improves comfort during driving.



Series	size	LI	S R	Standard Rim	Section width(mm)	Overall Diameter(mm)	Max KG	Load LBS	Max Pressure KPA	PSI	Tread Depth(mm)
50	195/50R15	82	V	6J	201	577	475	1047	300	44	7
55	195/55R15	85	V	6J	201	595	515	1135	300	44	7
	185/55R15	82	H	6J	194	585	475	1047	300	44	7
	185/55R16	87 XL	V	6J	194	610	545	1201	340	49	7
	205/55R16	91	V	6½J	214	632	615	1356	300	44	7.8
60	175/60R13	77	H	5.00B	177	540	412	908	300	44	6.7
	165/60R14	75	T	5 J	170	554	387	853	300	44	6.7
	185/60R14	82	H	5½J	189	578	475	1047	300	44	7.6
	195/60R14	86	H	6J	201	590	530	1168	300	44	7
	205/60R14	88	V	6J	209	602	560	1235	300	44	7
	165/60R15	77	H	5J	170	579	412	908	300	44	6.7
	175/60R15	81	H	5J	177	591	462	1019	300	44	6.7
	185/60R15	84	H	5½J	189	603	500	1102	300	44	7.6
	195/60R15	88	H	6 J	201	615	560	1235	300	44	7
	205/60R15	91	V	6J	209	627	615	1356	300	44	7
	205/60R16	92	V	6J	209	652	630	1389	300	44	7
	215/60R16	95	V	6½J	221	664	690	1521	300	44	7
	225/60R16	98	H	6½J	228	676	750	1653	300	44	7
65	155/65R13	73	T	4.50B	157	532	365	805	300	44	6.7
	165/65R13	77	T	6 J	170	544	412	908	300	44	7.3
	155/65R14	75	H	4½J	157	558	387	853	300	44	6.7
	165/65R14	79	H	5J	170	570	437	963	300	44	6.7
	175/65R14	82	T	5 J	177	584	475	1047	300	44	6.7
	185/65R14	86	H	5½J	189	596	530	1168	300	44	7
	175/65R15	84	H	5J	177	609	500	1102	300	44	6.7
	185/65R15	88	H	5 1/2 J	189	621	560	1235	300	44	7.6
	195/65R15	91	H	6 J	201	635	615	1356	300	44	7.8
	205/65R15	94	H	6 J	209	647	670	1477	300	44	7.8
	215/65R15	100 XL	T	6½J	221	661	800	1764	340	49	7
	205/65R16	95	V	6J	209	672	690	1521	300	44	7
	215/65R16	98	V	6½J	221	686	750	1653	300	44	7
70	155/70R13	75	T	4.50B	157	548	387	853	300	44	6.7
	165/70R13	79	T	5 J	170	562	437	963	300	44	6.7
	175/70R13	82	T	5 J	177	576	475	1047	300	44	7.6
	185/70R13	86	T	5.50B	189	590	530	1168	300	44	7
	165/70R14	81	T	5 J	170	588	462	1019	300	44	6.7
	175/70R14	84	T	5 J	177	602	500	1102	300	44	7.6
	185/70R14	88	H	5½J	189	616	560	1235	300	44	7
	195/70R14	91	H	6J	201	630	615	1356	300	44	7
80	155/80R13	79	T	4.50B	157	578	437	963	300	44	6.7

EPOCH SPORT ES



Excellent drainage performance

Four wide longitudinal drainage grooves provide excellent tire drainage performance, enhancing the handling performance of wet driving on rainy days.



Improve service life

The edge of the groove is specially treated to prevent abnormal tire wear, improve tire safety and extend tire life



NOISE ABSORPTION

Silent variable pitch design, through computer analysis and optimization of tread pattern, reduces tire noise, and provides a quieter and more comfortable driving experience.

BETTER HANDLING PERFORMANCE

The serrated edge design of the tread blocks improves the rigidity of the tread blocks and brings better handling performance.

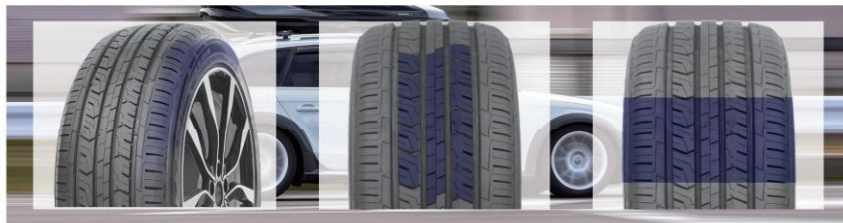
SPORTS HANDLING EXPERIENCE

The wide and continuous tread block design on the outside effectively improves the tire's handling performance and brings the ultimate sports handling experience.

Series	size	L.I	S.R	Standard Rim	Section Width(mm)	Overall Diameter(mm)	Max KG	Load LBS	Max Pressure KPA	PSI	Tread Depth(mm)
30	275/30ZR20	93	W	9½J	278	674	650	1433	300	44	7.2
35	215/35ZR18	84 XL	W	7½J	218	607	500	1102	340	49	7.2
	255/35ZR18	94 XL	W	9 J	260	635	670	1477	340	49	7.2
	265/35ZR18	93	W	9½J	271	643	650	1433	300	44	7.2
	225/35ZR19	84	W	8 J	230	641	500	1102	300	44	7.2
	235/35ZR19	91 XL	W	8½J	241	647	615	1356	340	49	7.2
	245/35ZR19	93 XL	W	8½J	248	655	650	1433	340	49	7.2
	255/35ZR19	96 XL	W	9J	260	661	710	1565	340	49	7.2
	276/36ZR19	100 XL	W	9½J	278	675	800	1764	340	49	7.2
	255/35ZR20	97 XL	W	9J	260	686	730	1609	340	49	7.2
	275/35ZR20	98	W	9½J	278	700	750	1653	300	44	7.2
40	205/40ZR17	84 XL	W	7½J	212	596	500	1102	340	49	7.2
	215/40ZR17	87 XL	W	7½J	218	604	545	1201	340	49	7.2
	215/40ZR18	85	W	7½J	218	629	515	1135	300	44	7.2
	225/40ZR18	82 XL	W	8 J	230	637	530	1209	340	49	7.2
	235/40ZR18	95 XL	W	8½J	241	645	690	1521	340	49	7.2
	245/40ZR18	97 XL	W	8½J	248	653	730	1609	340	49	7.2
	235/40ZR19	92	W	8½J	241	671	630	1389	300	44	7.2
	245/40ZR19	98 XL	W	8½J	248	679	750	1653	340	49	7.2
	275/40ZR19	101	W	9½J	278	703	825	1819	300	44	7.2
	245/40ZR20	95	W	8½J	248	704	690	1521	300	44	7.2
	275/40ZR20	106 XL	W	9½J	278	728	950	2094	340	49	7.2

Series	size	L.I	S.R	Standard Rim	Section Width(mm)	Overall Diameter(mm)	Max KG	Load LBS	Max Pressure KPA	PSI	Tread Depth(mm)
45	195/45R16	84 XL	V	6½J	196	582	600	1102	340	49	7.2
	205/45ZR16	87 XL	W	7J	206	590	545	1201	340	49	7.2
	215/45ZR16	90 XL	W	7J	213	600	600	1323	340	49	7.2
	205/45ZR17	88 XL	W	7J	206	616	560	1235	340	49	7.2
	215/45ZR17	91 XL	W	7 J	213	626	615	1356	340	49	7.2
	225/45ZR17	94 XL	W	7½J	225	634	670	1477	340	49	7.2
	235/45ZR17	97 XL	W	8 J	230	644	730	1609	340	49	7.2
	245/45ZR17	99 XL	W	8J	243	652	775	1709	340	49	7.2
45	215/45ZR18	89	W	7J	213	651	580	1279	300	44	7.2
	225/45ZR18	95 XL	W	7½J	225	659	690	1521	340	49	7.2
	235/45ZR18	98 XL	W	8 J	236	669	750	1653	340	49	7.2
	245/45ZR18	100 XL	W	8J	243	677	800	1764	340	49	7.2
	255/45R18	99	W	8½J	255	687	775	1709	300	44	7.2
	245/45ZR20	99	W	8J	243	728	775	1709	300	44	7.2
	245/45ZR19	98	W	8J	243	703	750	1653	300	44	7.2
	255/45ZR20	101	W	8½J	255	738	825	1819	300	44	7.2
	275/45ZR20	110 XL	W	9J	273	756	1060	2337	340	49	7.2
50	195/50R16	88 XL	V	6J	201	602	560	1235	340	49	7.2
	205/50ZR16	87	W	6½J	214	612	545	1201	300	44	7.2
	215/50ZR17	95 XL	W	7J	226	648	690	1521	340	49	7.2
	225/50ZR17	94	W	7 J	233	658	670	1477	300	44	7.2
	235/50ZR17	96	W	7½J	245	668	710	1565	300	44	7.2
	205/50ZR17	93 XL	W	6 1/2 J	214	638	650	1433	340	49	7.2
	215/50R18	92	V	7J	226	673	630	1389	300	44	7.2
	225/50R18	95	V	7J	233	683	690	1521	300	44	7.2
	235/50ZR18	101 XL	W	7½J	245	693	825	1819	340	49	7.2
	245/50ZR18	100	W	7½J	253	703	800	1764	300	44	7.2
55	195/55ZR16	87	W	6J	201	620	545	1201	300	44	7.2
	205/55ZR16	91	W	6½J	214	632	615	1356	300	44	7.2
	215/55ZR16	97 XL	W	7J	226	642	730	1609	340	49	7.2
	225/55ZR16	99 XL	W	7J	233	654	775	1709	340	49	7.2
	205/55ZR17	95 XL	W	6½J	214	658	690	1521	340	49	7.2
	215/55ZR17	98 XL	W	7 J	226	668	750	1653	340	49	7.8
	225/55ZR17	101 XL	W	7 J	233	680	825	1819	340	49	7.2
	235/55ZR17	103 XL	W	7½J	245	690	875	1929	340	49	7.2
	235/55R18	104 XL	V	7½J	245	715	900	1984	340	49	7.2
	275/55R20	117 XL	V	8½J	284	810	1285	2833	340	49	7.2
60	195/60R16	89	H	6J	201	640	580	1279	300	44	7.2

ROADCROSSER H/T



WIDE SHOULDER DESIGN
The wide shoulder design provides excellent handling.

VARIABLE PITCH PATTERN DESIGN
The variable pitch pattern design is optimized through computer simulation, reducing tire noise.

CLAW-SHAPED PATTERN
The claw-shaped pattern provides precise and fast control response experience.

Series	size	L.I	S.R	Standard Rim	Section Width(mm)	Overall Diameter(mm)	Max KG	Load LBS	Max Pressure KPA	PSI	Tread Depth(mm)
45	235/45R19	95	V	8.0J	236	695	690	1521	300	44	7.8
	255/45R19	100	V	8.5J	255	713	800	1764	300	44	7.8
	265/45ZR20	104	W	9.0J	266	746	900	1984	300	44	7.8
	265/45R21	108XL	V	9.0J	266	771	1000	2205	340	49	7.3
	275/45ZR21	110XL	W	9.0J	273	781	1060	2337	340	49	7.3
50	235/50R19	99	V	7.5J	245	719	775	1709	300	44	7.8
	245/50ZR19	105	W	7.5J	253	729	925	2039	340	49	7.3
	255/50ZR19	107XL	W	8.0J	265	739	975	2149	340	49	7.8
	265/50ZR19	110XL	W	8.5J	277	749	1060	2337	340	49	7.8
	235/50R20	104XL	V	7.5J	245	744	900	1984	340	49	7.3
	245/50R20	102	V	7.5J	253	754	850	1874	300	44	7.3
	265/50R20	111XL	V	8.5J	277	774	1090	2403	340	49	7.3
	275/50ZR20	113XL	W	8.5J	284	784	1150	2535	340	49	8.1
	285/50R20	112	V	9.0J	297	794	1120	2469	300	44	7.3
	275/50R21	113XL	V	8.5J	284	809	1150	2535	340	49	7.3
275/50R22	111	V	8.5J	284	835	1090	2403	300	44	7.3	
55	235/55R17	99	V	7.5J	245	690	775	1709	300	44	7.8
	215/55R18	95	V	7.0J	226	693	690	1521	300	44	7.8
	225/55R18	98	V	7.0J	233	705	750	1653	300	44	7.8
	235/55R18	100	V	7.5J	245	715	800	1764	300	44	7.8
	255/55ZR18	109XL	W	8.0J	265	737	1030	2271	340	49	7.8
	235/55R19	99	V	7.0J	233	731	775	1709	300	44	7.0
	235/55R19	105XL	V	7.5J	245	741	925	2039	340	49	7.8
	245/55ZR19	103	W	7.5J	253	753	875	1929	300	44	7.8
	255/55R19	111XL	V	8.0J	265	763	1090	2403	340	49	7.8
	275/55ZR19	111	W	8.5J	284	785	1090	2403	300	44	8.1
60	235/55R20	105XL	V	7.5J	245	766	925	2039	340	49	7.3
	235/60R16	100	V	7.0J	240	688	800	1764	300	44	7.8
	215/60R17	96	H	6.5J	221	690	710	1565	300	44	7.8
	225/60R17	99	V	6.5J	228	702	775	1709	300	44	7.8
	225/60R18	100	H	6.5J	228	727	800	1764	300	44	7.8
	235/60R18	107XL	V	7.0J	240	739	975	2149	340	49	7.8
	245/60R18	105	V	7.0J	248	751	925	2039	300	44	7.8
	255/60R18	108	H	7.5J	260	763	1000	2205	300	44	7.8
	265/60R18	110	H	8.0J	272	775	1060	2337	300	44	7.8
	275/60R20	115	H	8.0J	279	838	1215	2679	300	44	7.3

Series	size	L.I	S.R	Standard Rim	Section Width(mm)	Overall Diameter(mm)	Max KG	Load LBS	Max Pressure KPA	PSI	Tread Depth(mm)
65	215/65R16	98	H	6.5J	221	686	750	1653	300	44	7.8
	215/65R17	99	V	6.5J	221	712	775	1709	300	44	7.3
	225/65R17	102	V	6.5J	228	724	850	1874	300	44	7.8
	235/65R17	108XL	V	7.0J	240	738	1000	2205	340	49	7.8
	245/65R17	107	H	7.0J	248	750	975	2149	300	44	7.8
	265/65R17	112	H	8.0J	272	776	1120	2469	300	44	7.8
70	235/65R18	106	H	7.0J	240	763	950	2094	300	44	7.8
	265/65R18	114	H	8.0J	272	801	1180	2601	300	44	7.3
	205/70R15	96	H	6.0J	209	669	710	1565	300	44	7.8
	215/70R16	100	H	6.5J	221	708	800	1764	300	44	7.3
	225/70R16	103	H	6.5J	228	722	875	1929	300	44	7.8
	235/70R16	106	H	7.0J	240	736	950	2094	300	44	8.1
	245/70R16	111XL	H	7.0J	248	750	1090	2403	340	49	7.3
	255/70R16	111	H	7.5J	260	764	1090	2403	300	44	8.1
	265/70R16	112	T	8.0J	272	778	1120	2469	300	44	7.3
	265/70R17	115	H	8.0J	272	804	1215	2679	300	44	7.3
75	255/70R18	113	H	7.5J	260	815	1150	2535	300	44	7.3
	265/70R18	116	T	8.0J	272	829	1250	2756	300	44	8.1
	215/75R15	100	H	6.0J	216	703	800	1764	300	44	7.3
	225/75R15	102	H	6.0J	223	719	850	1874	300	44	7.3
	235/75R15	105	H	6.5J	235	733	925	2039	300	44	7.3

PATHBREAKER A/T



BETTER HANDLING PERFORMANCE

Rectangle shoulder and wide tread design with 3D multiple thin sipes increases road contact area, provides superior handling on both wet and dry surfaces, and enhances wear-resisting performance.

EXCELLENT SECURITY PERFORMANCE

Wide pyramidal-shaped sipes for all-weather and various roads delivers excellent safety, maintains firm grip performance and aquaplaning resistance on wet roads, and enhances off-road steering response.

NOISE ABSORPTION

Optimized pitching sequence blocks design offers quieter ride.

UNIQUE PROTECTION DESIGN

Unique lateral flange protector design enhances protection from puncture and impact damage.

size	P.R	L.I	S.R	Standard Rim	Section Width(mm)	Overall Diameter(mm)	Max Load KG	Max Load LBS	Max Pressure KPA	Max Pressure PSI	Tread Depth(mm)
31X10.50R15LT	6PR	109	S	8½J	268	775	1030	2270	350	50	11.5
285/60R18	-	120 XL	H	8½J	292	799	1400	3086	340	49	10.2
235/60R18	-	107 XL	H	7J	240	739	975	2149	340	49	9.5
225/65R17	-	106 XL	H	6½J	228	724	950	2094	340	49	9.5
LT245/65R17	8PR	111/108	S	7J	248	750	1090	2405	450	65	11.5
LT265/65R17	10PR	120/117	S	8J	272	776	1400	3085	550	80	11.5
LT285/65R18	10PR	125/122	S	8½J	292	827	1650	3640	550	80	12.1
235/70R16	-	106	T	7J	240	736	950	2094	300	44	10.2
LT245/70R16	10PR	118/115	S	7J	248	750	1320	2910	550	80	11.5
LT255/70R16	8PR	115/112	S	7½J	260	764	1215	2680	450	65	11.5
LT265/70R16	10PR	121/118	S	8J	272	776	1450	3195	550	80	11.5
LT285/70R17	8PR	121/118	S	8½J	292	832	1450	3195	450	65	12.1
LT215/75R15	6PR	100/97	S	6J	216	703	800	1765	350	50	11.6
LT235/75R15	10PR	116/113	S	6½J	235	733	1250	2755	550	80	11.5
LT245/75R16	10PR	120/116	S	7J	248	774	1380	3042	550	80	11.5
LT265/75R16	10PR	123/120	S	7½J	267	804	1650	3415	660	80	11.5
LT285/75R16	8PR	122/119	S	8 J	286	834	1500	3305	450	65	12.1



MUDBREAKER MT

- Especially designed for unpaved tough roads.
- Various shoulder blocks promote driving and handling performance on tough roads.
- Perfect grip on tough surfaces such as mud and sand.

size	P.R	L.I	S.R	Standard Rim	Section Width(mm)	Overall Diameter(mm)	Max KG	Load LBS	Max Pressure KPA	PSI	Tread Depth(mm)
LT285/70R17	8PR	121/118	Q	8½J	292	832	1450	3195	450	65	14.6
LT265/70R17	10PR	121/118	Q	8J	272	804	1450	3195	550	80	14.6
LT275/70R18	10PR	125/122	Q	8J	279	843	1650	3640	550	80	14.6
LT235/75R16	10PR	117/114	Q	6½J	235	758	1285	2835	550	80	14.6
LT245/75R16	10PR	120/116	N	7J	248	774	1380	3042	550	80	14.6
LT265/75R16	10PR	123/120	N	7½J	267	804	1550	3415	550	80	14.6
LT285/75R16	8PR	122/119	Q	8J	286	834	1500	3305	450	65	14.6
LT235/85R16	10PR	120/116	N	6½J	235	806	1380	3042	550	80	14.6
31x10.50R15LT	6PR	109	Q	8½J	268	775	1030	2270	350	50	14.6
33X12.50R15LT	6PR	108	Q	10J	318	826	1000	2205	250	35	14.6
35X12.50R18LT	10PR	123	Q	10J	318	877	1550	3415	450	65	14.6
35X12.50R20LT	10PR	121	Q	10J	318	877	1450	3195	450	65	14.6
35X12.50R17LT	8PR	119	Q	10J	318	877	1360	3000	350	50	14.6

EMPIRE TRAC ET



- Special compound design ensures along mileage.
- The combination of blocks provides a superior driving performance and a strong grip.
- Three main grooves contribute to better water drainage and wet traction.

size	P.R	L.I	S.R	Standard Rim	Section Width(mm)	Overall Diameter(mm)	Max KC	Load LBS	Max Pressure KPA	PSI	Tread Depth(mm)
185R14C	8PR	102/100	Q	5½J	188	650	850	1874	450	65	8.4
195R14C	8PR	106/104	Q	5½J	198	666	950	2094	450	65	8.7
195R15C	8PR	106/104	Q	5½J	198	690	950	2094	450	65	8.7
195/65R16C	6PR	104/102	R	6J	201	660	900	1984	475	68	9.7
205/65R16C	8PR	107/105	R	6J	209	672	975	2149	475	68	9.7
215/65R16C	8PR	109/107	R	6½J	221	686	1030	2271	475	68	9.7
225/65R16C	8PR	112/110	R	6½J	228	698	1120	2469	475	68	9.7
235/65R16C	6PR	115/113	R	7J	240	712	1215	2679	475	68	9.7
175/70R14LT	8PR	95/93	R	5J	177	602	690	1520	375	54	8
195/70R15C	8PR	104/102	R	6J	201	655	900	1984	450	65	10.2
205/70R15C	8PR	106/104	R	6J	209	669	950	2094	450	65	10.2
225/70R15C	8PR	112/110	R	6½J	228	697	1120	2469	450	65	10.2
215/70R16LT	8PR	100/97	N	6½J	221	708	800	1765	350	50	9.7
185/75R16C	8PR	104/102	R	5J	184	684	900	1984	475	68	8.4
195/75R16C	8PR	107/105	R	5½J	196	698	975	2149	475	68	8.7
215/75R15LT	6PR	100/97	N	6J	216	703	800	1765	350	50	9.7
215/75R16C	10PR	116/114	R	6J	216	728	1250	2756	525	76	9.7





EMPIRE TRAC ET2



size	P.R	LI	S.R	Standard Rim	Section Width(mm)	Overall Diameter(mm)	Max Load KG	Max Load LBS	Max Pressure KPA	Max Pressure PSI	Tread Depth(mm)
155R13C	8PR	90/88	N	4.50B	157	578	600	1323	450	65	8
165R13C	8PR	94/93	N	4.50B	165	594	670	1475	450	65	8
175R13C	8PR	97/95	Q	5.00B	177	610	730	1609	450	65	8
165/70R13LT	6PR	88/86	T	5.00B	170	562	560	1235	375	54	8
165/70R14LT	6PR	89/87	R	5J	170	588	580	1280	375	54	8

EMPIRE TRAC ET3



size	P.R	LI	S.R	Standard Rim	Section Width(mm)	Overall Diameter(mm)	Max Load KG	Max Load LBS	Max Pressure KPA	Max Pressure PSI	Tread Depth(mm)
6.50R16LT	10PR	107/102	M	5.50F	185	750	975	2150	560	81	9.7
7.00R16LT	10PR	111/107	M	5.50F	200	775	1090	2405	560	81	10.7
7.50R16LT	14PR	123/121	M	6.00G	215	805	1510	3330	700	102	10.7

POLARWOLF 505



SIZE	LI	S.R	Standard Rim	Section Width(mm)	Overall Diameter(mm)	Max Load KG	Max Load LBS	Max Pressure KPA	Max Pressure PSI	Tread Depth(mm)
215/50R17	91	T	7J	226	648	615	1356	300	44	8.7
205/55R16	94XL	H	6 1/2J	214	632	670	1477	340	50	7.8
215/55R16	97XL	V	7J	226	642	730	1609	340	50	8.5
225/55R16	95	T	7J	233	654	690	1521	300	44	8.5
225/55R17	101XL	V	7J	233	680	825	1819	340	50	8.6
185/60R14	82	H	5 1/2J	189	578	475	1047	300	44	8.2
185/60R15	84	T	5 1/2J	189	603	500	1102	300	44	8.7
195/60R15	88	H	6J	201	615	560	1235	300	44	8.3
205/60R16	92	T	6J	209	652	630	1389	300	44	8.7
215/60R16	99XL	H	6 1/2J	221	664	775	1709	340	50	8.5
175/65R14	86XL	T	5J	177	584	530	1168	340	50	8.1
185/65R14	86	T	5 1/2J	189	596	530	1168	300	44	8.2
185/65R15	88	H	5 1/2J	189	621	560	1235	300	44	8.2
195/65R15	91	H	6J	201	635	615	1356	300	44	8.3
205/65R15	94	T	6J	209	647	670	1477	300	44	8.4
215/65R16	98	H	6 1/2J	221	686	750	1653	300	44	8.5
165/70R13	79	T	5.00B	170	562	437	963	300	44	8
175/70R14	84	T	5J	177	602	500	1102	300	44	8.7

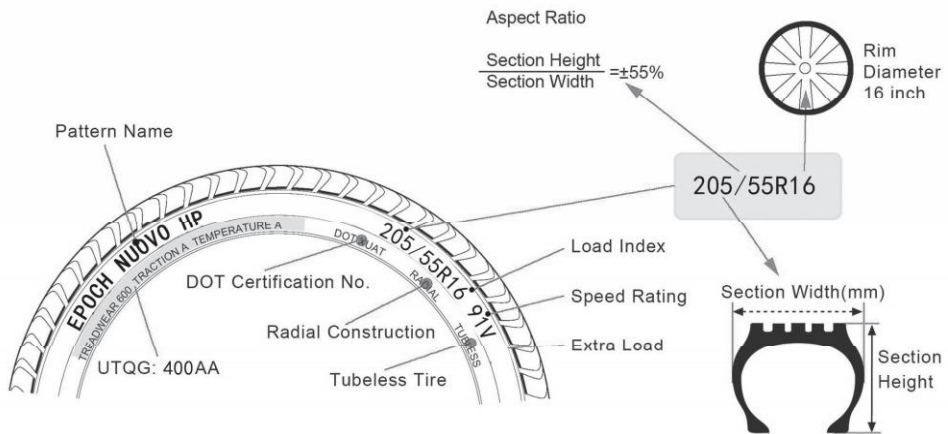


POLARWOLF 506



SIZE	LI	S.R	Standard Rim	Section Width(mm)	Overall Diameter(mm)	Max Load KG	Max Load LBS	Max Pressure KPA	Max Pressure PSI	Tread Depth(mm)
255/40R20	97	T	9J	260	712	730	1609	300	44	8.5
235/45R17	94	T	8J	236	644	670	1477	300	44	8.7
225/45R19	92	T	7 1/2J	225	685	630	1389	300	44	8.6
245/45R18	96	T	8J	243	677	710	1565	300	44	8.7
245/45R19	102XL	H	8J	243	703	850	1874	340	50	8.5
245/45R20	103XL	H	8J	243	728	875	1929	340	50	8.5
225/50R18	95	T	7J	233	683	690	1521	300	44	8.6
235/50R18	97	T	7 1/2J	245	693	730	1609	300	44	9
235/50R19	99	H	7 1/2J	245	719	775	1709	300	44	8.8
255/50R19	107XL	T	8J	265	739	975	2149	340	50	8
245/50R20	102	T	7 1/2J	253	754	850	1874	300	44	9
215/55R17	94	T	7J	226	668	670	1477	300	44	9.2
235/55R17	103XL	V	7 1/2J	245	690	875	1929	340	50	8.7
225/55R18	98	T	7J	233	705	750	1653	300	44	8.5
235/55R19	101	T	7 1/2J	245	741	825	1819	300	44	9
245/55R19	103	T	7 1/2J	253	753	875	1929	300	44	9
235/55R20	102	T	7 1/2J	245	766	850	1874	300	44	9
225/60R17	99	H	6 1/2J	228	702	775	1709	300	44	8.6
235/60R18	107XL	V	7J	240	739	975	2149	340	50	8.7
235/60R19	107XL	H	7J	240	765	975	2149	340	50	8.8
235/65R17	108XL	V	7J	240	738	1000	2205	340	50	8.7
265/65R17	112	T	8J	272	776	1120	2469	300	44	9
235/70R16	109XL	H	7J	240	736	1030	2271	340	50	8.7
265/70R18	116	T	8J	272	829	1250	2756	300	44	9
185R14C-8PR	102/100	Q	5 1/2J	188	650	850	1875	450	65	8.4





Speed Symbols

SI	KM/H
B	50
C	60
D	65
E	70
F	80
G	90
J	100
K	110
L	120
M	130
N	140
P	150
Q	160
R	170
S	180
T	190
U	200
H	210
V	240
W	270
Y	300
Z	Above 240

Load Capacity Index

LI	KG	LI	KG	LI	KG	LI	KG
50	190	70	335	90	600	110	1060
51	195	71	345	91	615	111	1090
52	200	72	355	92	630	112	1120
53	206	73	365	93	650	113	1150
54	212	74	375	94	670	114	1180
55	218	75	387	95	690	115	1215
56	224	76	400	96	710	116	1250
57	230	77	412	97	730	117	1285
58	236	78	425	98	750	118	1320
59	243	79	437	99	775	119	1360
60	250	80	450	100	800	120	1400
61	257	81	462	101	825	121	1450
62	265	82	475	102	850	122	1500
63	272	83	487	103	875	123	1550
64	280	84	500	104	900	124	1600
65	290	85	515	105	925	125	1650
66	300	86	530	106	950	126	1700
67	307	87	545	107	975	127	1750
68	315	88	560	108	1000	128	1800
69	325	89	580	109	1030	129	1850
						130	1900

